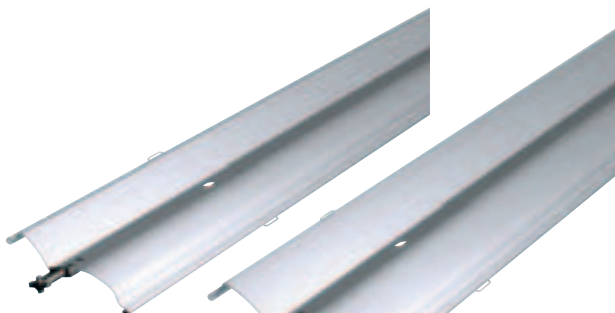


The entire WAREMA range of sun shading products always fully reflects present day requirements. It has a modern designs, and is technically advanced, innovative and versatile, meeting the demands of users and developing continuously. Safety, energy savings, comfort and, last but not least, design are now the central aspects of the new developments at WAREMA.

Dimming external venetian blinds



example of
slat-type
external
venetian blind
E 73 A6



example of
slat-type
external
venetian blind
E 93 A6



example of
slat-type
external
venetian blind
E 90 A6



WAREMA dimming external venetian blinds offer more than just privacy and sun shading. The classic Z-shaped slat was replaced by the new 73 and 93 mm types with new louvre geometry. The new types are characterised by improved closing performance and increased slat stiffness, a higher degree of transparency when the slats are open and also smaller stacks. The tilting bottom rail with flattened sides was designed to maximise the effectiveness of the closure at the window sill.

In addition to domestic applications, dimming external venetian blinds are also particularly suitable for schools and commercial buildings where, in addition to standard functions such as protection from sun and heat, it must also be possible to effectively reduce daylighting levels for presentations.

These types now also include the addition of the 90 mm undulating slat. A further version of the undulating dimming slat is available in addition to the classic section guide with guiding nipple in an aluminium guide rail. Here, the slats are guided by a special stamped cutout in a light gap cover made of technical grade plastic that prevents light from entering between the slat and guide.

Dimming external venetian blinds 73/93/90 - already available.

Dimming external venetian blinds 90 with light gap cover - available from May 2010.